

APPLICATIONS

- ✧ RS-232, RS-422 & RS-423 Data Lines.
- ✧ Audio/Video Inputs.
- ✧ Wireless Network Systems.
- ✧ Ethernet - 10/100/100 Base T.
- ✧ WAN/LAN Equipment.
- ✧ Multi-Protocol Serial Transceivers.
- ✧ ADSL Interfaces.

IEC COMPATIBILITY

- ✧ IEC61000-4-2 (ESD) $\pm 15\text{kV}$ (air), $\pm 8\text{kV}$ (contact).
- ✧ IEC61000-4-4 (EFT) 40A (5/50 μs).

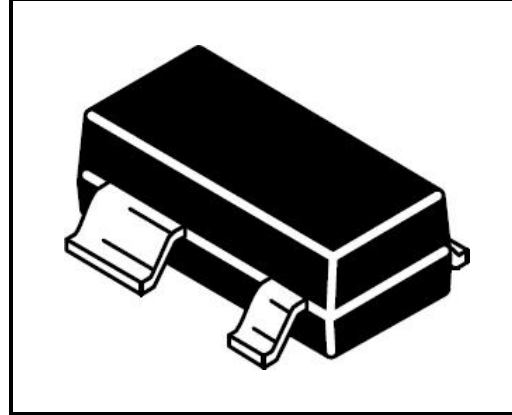
FEATURES

- ✧ 400 Watts Peak Pulse Power per Line ($t_p=8/20\mu\text{s}$).
- ✧ Protects One Bidirectional I/O Lines.
- ✧ Low Clamping Voltage.
- ✧ Working voltages : 5V, 8V, 12V, 15V, 18V and 24V.
- ✧ Low leakage current.

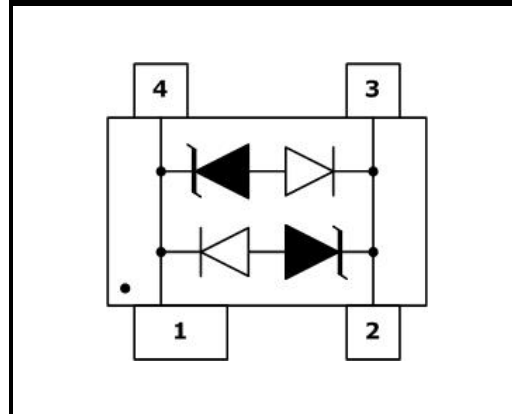
MECHANICAL CHARACTERISTICS

- ✧ SOT-143 Package.
- ✧ Molding Compound Flammability Rating : UL 94V-O.
- ✧ Weight 9 Milligrams (Approximate).
- ✧ Quantity Per Reel : 3,000pcs.
- ✧ Reel Size : 7 inch.
- ✧ Lead Finish : Lead Free.

SOT-143



PIN CONFIGURATION



DEVICE CHARACTERISTICS

MAXIMUM RATINGS (@ 25°C Unless Otherwise Specified)			
PARAMETER	SYMBOL	VALUE	UNITS
Peak Pulse Power (tp=8/20μs waveform)	P _{PP}	400	Watts
Lead Soldering Temperature	T _L	260 (10 sec.)	°C
Operating Temperature Range	T _J	-55 ~ 150	°C
Storage Temperature Range	T _{STG}	-55 ~ 150	°C

ELECTRICAL CHARACTERISTICS PER LINE (@ 25°C Unless Otherwise Specified)									
PART NUMBER	DEVICE MARKING	V _{RWM} (V) (max.)	V _B (V) (min.)	I _T (mA)	V _C @1A (max.)	V _C (max.) (@A)		I _R (μA) (max.)	C _T (pF) (typ.)
LC0501CDT4	DT5	5	6	1	9.8	20	25	1	3
LC0801CDT4	DT8	8	8.5	1	13.4	23	23	1	3
LC1201CDT4	DTA	12	13.3	1	19	30	13	1	3
LC1501CDT4	DTB	15	16.7	1	25	33	10	1	3
LC1801CDT4	DTC	18	19.5	1	32	40	9	1	3
LC2401CDT4	DTD	24	26.7	1	40	48	6	1	3

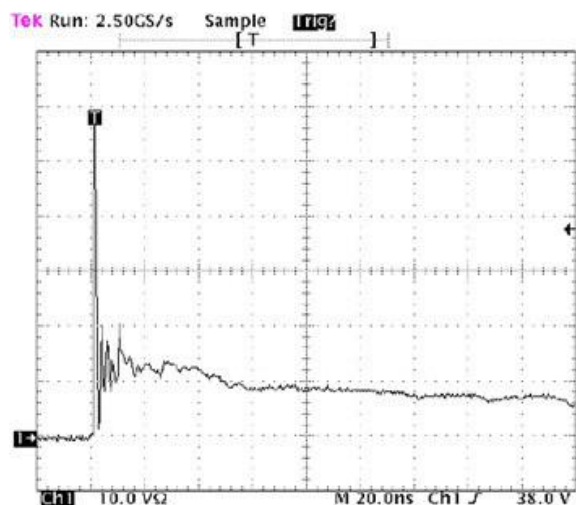


Figure 1. ESD Clamping Voltage Screenshot
Positive 8 kV contact per IEC 61000-4-2

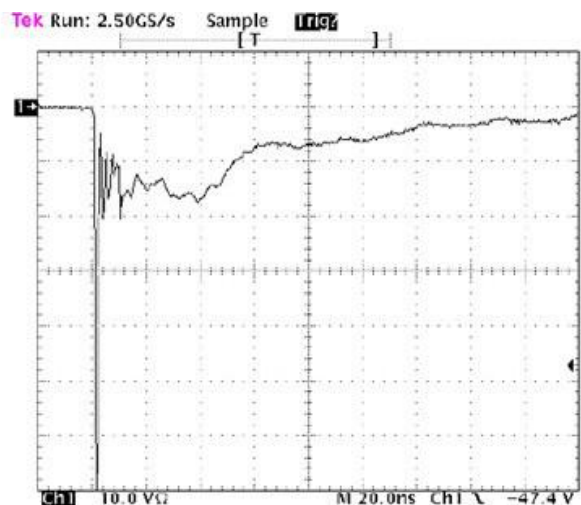


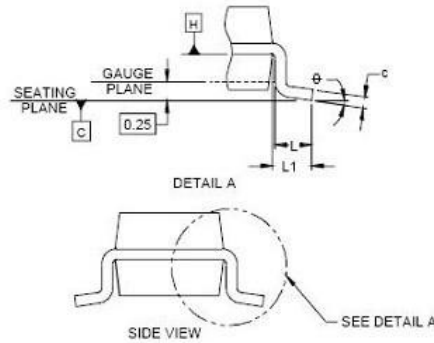
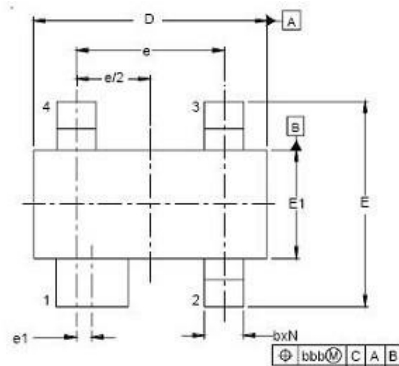
Figure 2. ESD Clamping Voltage Screenshot
Negative 8 kV contact per IEC 61000-4-2



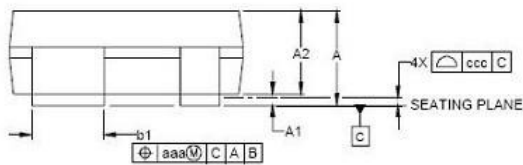
JKSEMI
金开盛电子

LC0501CDT4 thru LC2401CDT4

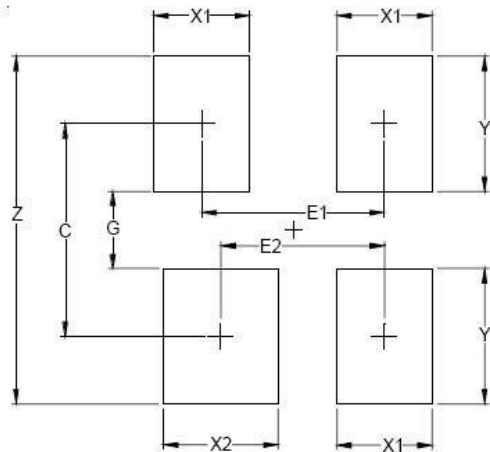
SOT-143 PACKAGE OUTLINE & DIMENSIONS



DIM	INCHES		MILLIMETERS	
	MIN	NOM	MAX	
A	.031	-	.048	0.80
A1	.000	-	.005	0.13
A2	.020	.025	.042	0.75
b	.011	-	.020	0.30
b1	.029	-	.037	0.76
c	.003	-	.008	0.08
D	.110	.114	.120	2.80
E	.082	.093	.104	2.10
E1	.047	.051	.055	1.20
e		.075		1.92 BSC
e1		.009		0.20 BSC
L	.015	.020	.024	0.40
L1		(.021)		(0.54)
N		4		4
Phi	0°	-	8°	0° - 8°
aaa		.005		0.15
bbb		.008		0.20
ccc		.004		0.10



* SOLDERING FOOTPRINT



DIMENSIONS		
DIM	INCHES	MILLIMETERS
C	(.087)	(2.20)
E1	.076	1.92
E2	.068	1.72
G	.031	0.80
X1	.039	1.00
X2	.047	1.20
Y	.055	1.40
Z	.141	3.60

Website: <http://www.jksemi.com>

For additional information, please contact your local Sales Representative.

©Copyright 2016, jksemi



JKSEMI
金开盛电子

is a registered trademark of jksemi All rights are reserved