

APPLICATIONS

- ✧ ADSL Lines.
- ✧ I2C Bus Protection.
- ✧ Video Line Protection.
- ✧ T1/E1 secondary IC Side Protection.
- ✧ Portable Electronics.
- ✧ Microcontroller Input Protection.
- ✧ WAN/LAN Equipment.
- ✧ ISDN S/T Interface.

IEC COMPATIBILITY

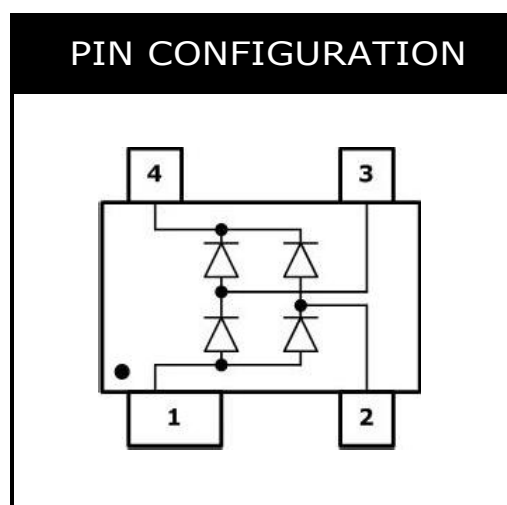
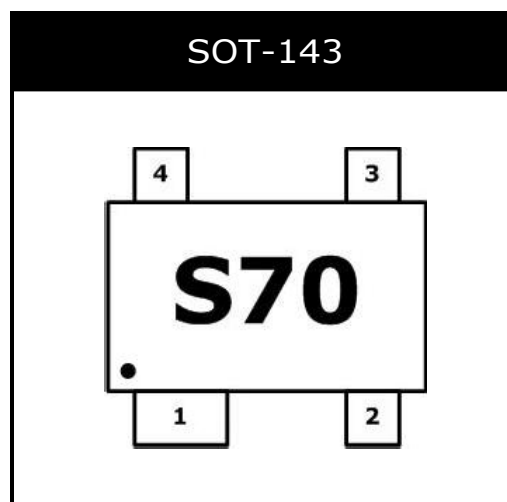
- ✧ IEC61000-4-2 (ESD) $\pm 15\text{kV}$ (air), $\pm 8\text{kV}$ (contact).
- ✧ IEC61000-4-4 (EFT) 40A (5/50ns).
- ✧ IEC 61000-4-5 (Lightning) 1kV, 24A (8/20 μs).

FEATURES

- ✧ Array of surge rated, low capacitance diodes.
- ✧ Protects two I/O lines.
- ✧ Low capacitance (3pF typical) for high-speed.
- ✧ Low clamping voltage.
- ✧ RoHS Compliant.

MECHANICAL CHARACTERISTICS

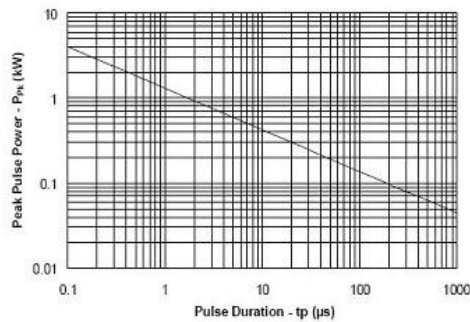
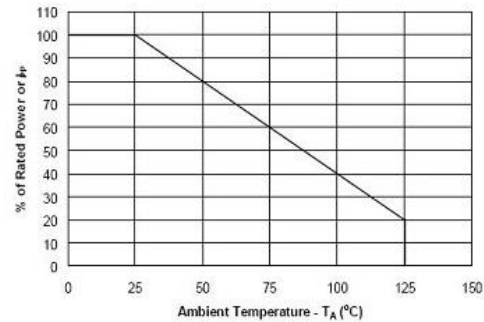
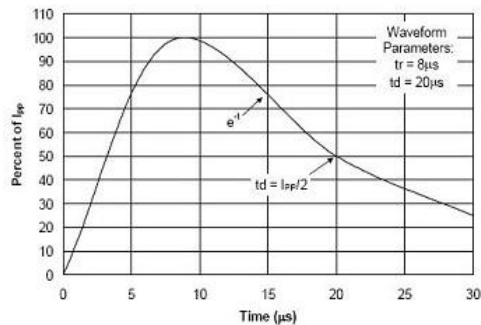
- ✧ JEDEC SOT-143 package.
- ✧ Molding Compound Flammability Rating : UL 94V-O.
- ✧ Weight 10 Milligrams (Approximate).
- ✧ Quantity Per Reel : 3,000pcs.
- ✧ Reel Size : 7 inch.
- ✧ Lead Finish : Lead Free.

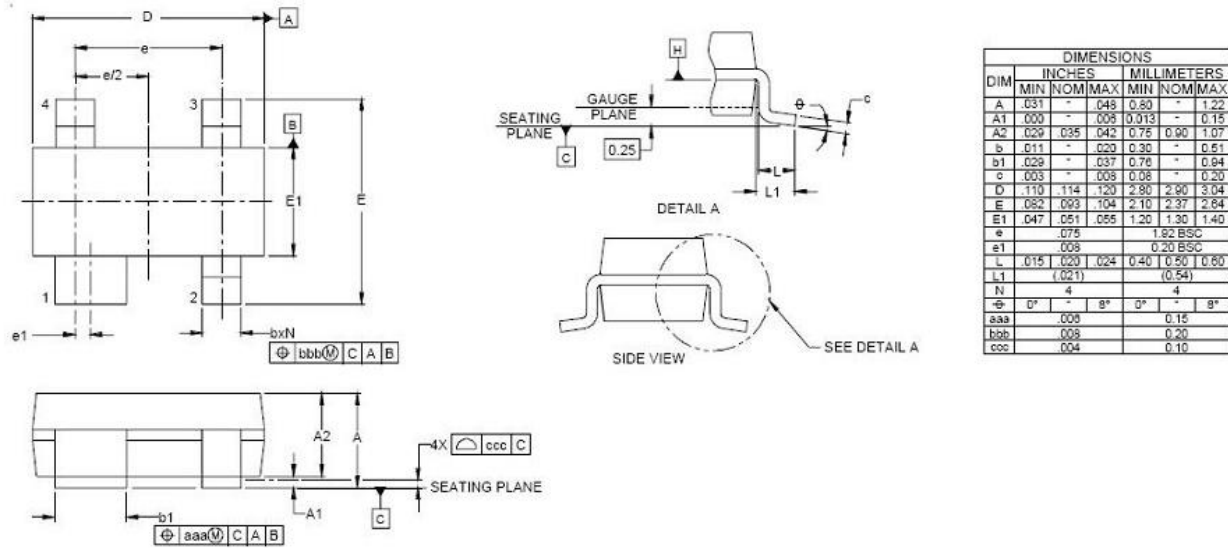
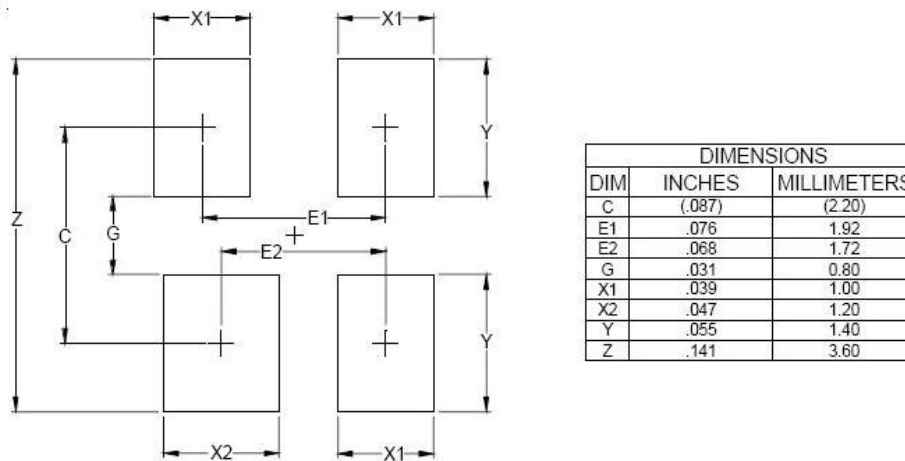


DEVICE CHARACTERISTICS

MAXIMUM RATINGS (@ 25°C Unless Otherwise Specified)			
PARAMETER	SYMBOL	VALUE	UNITS
Peak Pulse Current ($t_p = 8/20\mu s$)	I_{PP}	24	A
Rectifier Repetitive Peak Reverse Voltage	V_{RRM}	70	V
Lead Soldering Temperature	T_L	260 (10 sec.)	°C
Operating Temperature Range	T_J	-55 ~ 150	°C
Storage Temperature Range	T_{STG}	-55 ~ 150	°C

ELECTRICAL CHARACTERISTICS PER LINE (@ 25°C Unless Otherwise Specified)									
PART NUMBER	DEVICE MARKING	V_{RRM} (V) (max.)	V_B (V) (min.)	I_T (μA)	V_C @1A (max.)	V_C (max.) (@A)		I_R (μA) (max.)	C_T (pF) (typ.)
SR70	S70	70	85	50	1.5	7	17	1	3

Non-Repetitive Peak Pulse Power vs. Pulse Time

Power Derating Curve

Pulse Waveform


SOT-143 PACKAGE OUTLINE & DIMENSIONS

*** SOLDERING FOOTPRINT**


Website: <http://www.jksemi.com>

For additional information, please contact your local Sales Representative.

©Copyright 2016, jksemi